

OFFICE and/or DESK SPACE AVAILABLE FOR ARCHITECTS

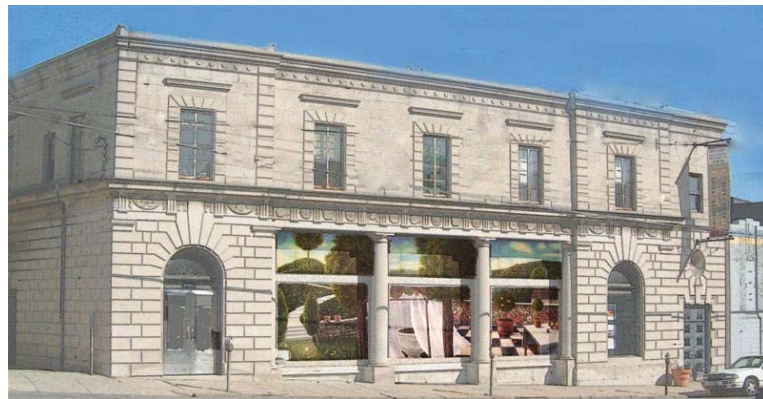
LOCATED IN WALNUT HILLS IN THE BUILDING THAT SERVED AS THE OFFICE FOR
HARRY HAKE, ARCHITECTS

The rent can include access to a 42 inch HP plotter, fax, telephone system, (with your own number, and many other things that you would expect to find in a small architectural office. There is also use of a kitchenette and conference room. The space ranges from a complete groups of rooms to desk and layout areas.

For more information email to Paul Muller, AIA at pmuller@mullerarchitects.com or call at 513 961-1616



The conference room as it looked in 1926, and just about how it looks today.



The exterior of the building located at 2400 Gilbert Avenue. (although the mural is not yet installed at 1st floor windows)